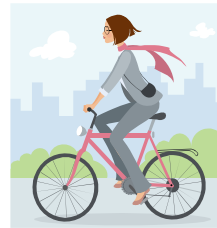


It's a Poker Run!! Well, sort of ...

Walk, Run, or Bicycle a 2.5 Mile Path at Point Lookout State Park (1.5 mile Path also available)



Sponsored by the
Maryland Park
Service



Be a fan.
Proceeds benefit
Special Olympics
St. Mary's County

Saturday, April 7, 2012

Registration: 9 am to 9:45 am

Event is from 10 - 11 am

**Each participant receives a poker card
at each rest stop (5)**

The top 3 hands win a prize

Registration fee: \$10/person prior to event; \$15/person day of event

Family of 3 or more \$25 prior to event; \$35 day of event

Participants are encouraged to obtain sponsors, but not necessary. All funds over the registration fee go directly to Special Olympics. Award for largest amount of sponsor donations.

For more information, contact 301-475-5749